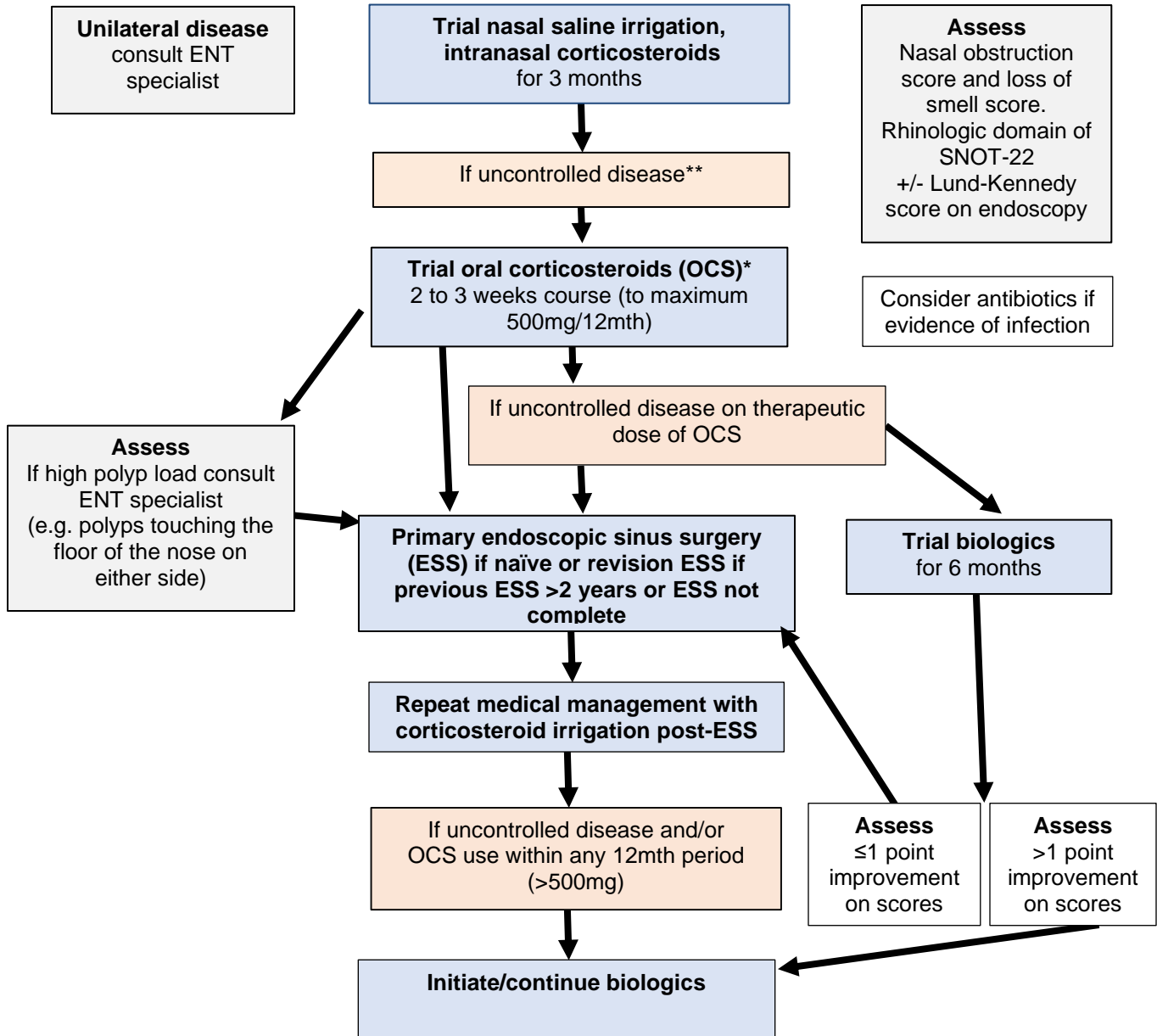


**Chronic Rhinosinusitis with Nasal Polyposis (CRSwNP)
Diffuse disease**



** Persistent symptoms impacting daily activities.
*1 point change assessment based on 6 point Likert score for nasal obstruction or smell.
+ Endoscopic sinus surgery to reshape the sinus cavity into a single neo-sinus cavity by a qualified ENT specialist.